

RERA No. :



SREE
DHRISHA
Homes

Premium 2 BHK Apartments
@Miyapur

Treasuring your lifetime memories

A PROJECT BY :

KALASHA
REALTORS
Future Ready Spaces



A LUXURY TO NOT WAIT FOR TOO LONG.

When you want to move in real quick, Shri Dhrisha Homes provides you with the option. Ready to move in spaces created specially for you, which can be occupied in no less than a year.

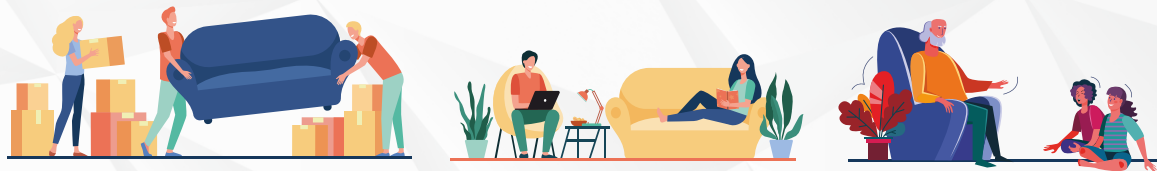


SREE
DHRISHA
Homes

PREMIUM 2 BHK APARTMENTS

@MIYAPUR

Treasuring your lifetime memories



- PROJECT DETAILS -



Total Units
15



2 BHK
Apartments



Area Range
900-1100 sft.



Floors
Stilt + 5 Floors

SREE
DHRISHA
Homes

Premium 2 BHK Apartments
@Miyapur

A Class Apart

DHRISHA HOMES

PROJECT HIGHLIGHTS



24*7 SECURITY



OPEN AIR GYM



KIDS PLAY AREA



24*7 SECURITY



ROOF TOP TERRACE



ORGANIC GARDEN



SOLAR FENCING



RAIN WATER HARVESTING

ENTRANCE



Terrace

For mesmerising views of sky



2D LAYOUT

For your evening refreshment



ORGANIC GARDEN

Like a friend you can visit any time



OPEN AIR GYM

Where workouts meets nature



Play the day away with
KIDS PLAY AREA



FLOOR PLAN



FLAT #1

WEST FACING UNIT

DETAILS

Carpent Area	579 sft.
Balcony Area	77.61 sft.
Total Plinth Area	776.95 sft.
SBAP Area	1100 sft.



2D View

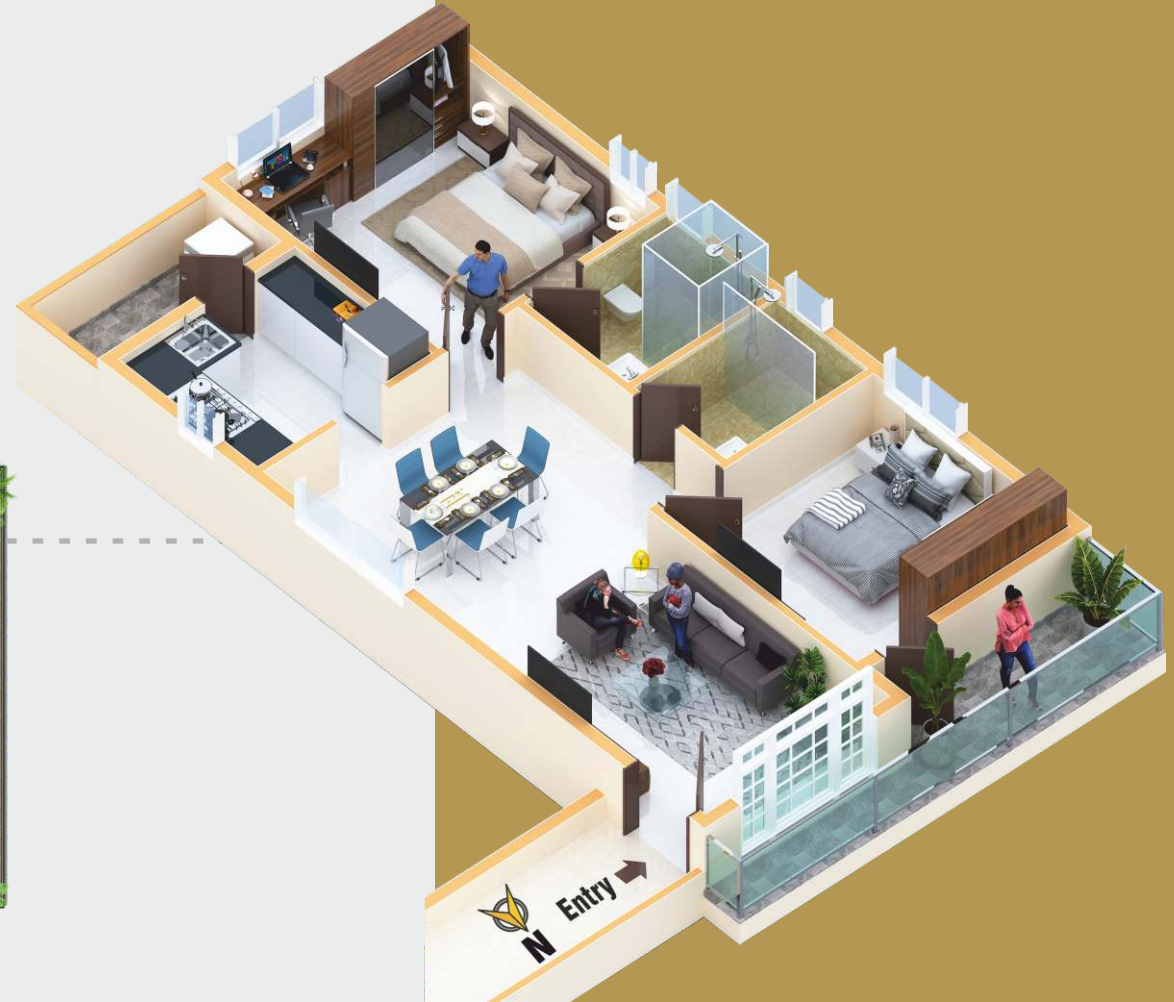


FLAT #3

EAST FACING UNIT

DETAILS

Carpent Area	624.85 sft.
Balcony Area	43.06 sft.
Total Plinth Area	776.95 sft.
SBAP Area	1100 sft.



2D View

LIVING AREA

A Playful Journey



KITCHEN

Where cooking is love



MASTER BEDROOM

Where your dreams are valid



SPECIFICATIONS

- **FRAMED STRUCTURE:** RCC Framed Structure to withstand Wind, Seismic Loads & Earthquake Resistant.
- **REINFORCEMENT STEEL:** 8mm - 25mm designed as per architect slat using Radha TMT.
- **SUPER STRUCTURE:** First-class brick masonry in cement mortar (1.6) prop.
- **SLAB STRUCTURE:** 1:2:4 prop with 20mm crushed store KCP Cement & Fine River Sand.
- **PLASTERING:** Two Coats of plastering in cement mortar (1.6) prop.
- **FLOORING - LIVING, DINING, BEDROOM & KITCHEN:** Marble / Blocks(24" x 24")
- **BATHROOMS:** Glazed Ceramic Dado Tiles upto door height & anti-skid ceramic tiles with CERA company bath fittings.
- **KITCHEN:** Glazed Ceramic tile upto 2'0" height above kitchen platform. Granite platform with stainless steel sink with both municipal & manjeerawater connection with provision for xing of Aqua-guard . Provision of cabinet, exhaust fan & chimney.
- **UITLITIES / WASH:** Glazed ceramic Dado tiles upto 3'0" height.
- **ELECTRICAL:** Finecab Concealed PVC piping and metal boxes with finecab copper wires and fortune modular switches and adequate light and fans/AC/16 amps with two points.
- **MAIN DOORS :** Teak Wood frames and shutter aesthetically designed with Melamine polishing and reputed hardware.
- **WINDOWS:** Sliding UPVC Windows with Mosquito Mesh. All window openings shall have grill.
- **INTERNAL DOORS:** Non Teak wood frames with push shutter.
- **PAINTING:** Asian Paints with Lappam finishing for Drawing Room, Dining halls and bedrooms. Water proof paint for external walls and enamel paint for wood.
- **PLUMBING:** Concealed piping with quality CP fitting.
- **LIFT:** 4 person capacity leading to all floors.
- **AMENITIES:** Car Parking Space, Lift, Generator, Electrical Transformer, Manjeera water connection, CCTV Survilliance, Solar Fencing, Terrace Sitout, Open Air Gym, Rain Water Harvesting, Organic Garden, Kids Play Area.

(NOTE: No individual internal changes charges as applicable)



LOCATION HIGHLIGHTS



EDUCATIONAL INSTITUTIONS

VNRVJIT	4.6 Kms.	11 Mins.
Delhi Public School	9.5 Kms.	17 Mins.
Ambitus World School	9.6 Kms.	18 Mins.
The Creek Planet School	8.3 Kms.	16 Mins.
DRK Engineering College	10 Kms.	19 Mins.
Oakridge International School	9.2 Kms.	19 Mins.
Silver Oak International Shool	4.7 Kms.	9 Mins.



OFFICES

Cyber Towers	10 Kms.	20 Mins.
MindSpace	13 Kms.	26 Mins.
Tech Mahindra	9.3 Kms.	19 Mins.
TCS Kondapur	9.9 Kms.	22 Mins.
Google	8.8 Kms.	18 Mins.



HEALTH CARE

Mamata Academy of Medical Science Hospital	3.8 Kms.	7 Mins.
SLG Hospitals	4 Kms.	10 Mins.
Usha Mulapudi Cardiac Center	8 Kms.	17 Mins.
Narayana Multispeciality Hospital	15 Kms.	32 Mins.
OMNI Hospital	9.5 Kms.	18 Mins.



CONNECTIVITY

Gandi Maisamma X Roads	16 kms.	30 Mins.
JNTU, Kukatpally	7.8 kms.	15 Mins.
Metro Station	3.6 kms.	3 Mins.
ORR Mallampet Road	7.2 kms.	15 Mins.
Forum Sujana Mall	10 kms.	21 Mins.
Miyapur Cross Road	2.5 kms.	6 Mins.
National Highway 44 (Kompally)	20kms.	31 Mins.



8 Mins. to JNTU



3 Mins. to Miyapur Metro Station



24 Mins. to Hitech City, Gachibowli



15 Mins. drive to ORR

OUR COMPLETED PROJECTS



CV TOWER 1
KAVURI HILLS, MADHAPUR



CV TOWER 2
KAVURI HILLS, MADHAPUR



CV TOWER 3
KAVURI HILLS, MADHAPUR



KV TOWER
KAVURI HILLS, MADHAPUR



ZEE ENTERTAINMENT
KAVURI HILLS, MADHAPUR



VV TOWER 1
KAVURI HILLS, MADHAPUR



NAYAN HARDWARE
KAVURI HILLS, MADHAPUR



MONSTER.COM
JUBILEE HILLS, RD. 45

120 YEARS OF TRUSTED LEGACY



Shri Chanda Anjaiah

Founder

Our legacy dates back to 1901 when Shri. Chanda Papaiah father of Shri. Chanda Anjaiah started a general store by the name M/s Chanda Anjaiah Parameshwar (CAP). Shri. Chanda Anjaiah migrated to Hyderabad city in the year 1925 and started working as

an accountant cum cashier at General Bazar, Secunderabad. In the year 1940, he continued the family business by diversifying into gold and jewellery trade M/s Chanda Anjaiah Parameshwar (CAP) was renamed as CapsGold Pvt. Ltd., in the year 2009 and is one of the leading gold and silver bullion merchants in India.



Store Of The Year 2017
- By UBM -



The Best
Heritage Bridal Jewellery
- Times Retail Icons 2018 -

KALASHA
FINE JEWELS

A Unit of CapsGold. Estd.: 1901



Flagship Store :
Avenue 4, Road #10, Banjara Hills, Hyderabad.

A destination in South India for
Fine Handcrafted & Heirloom Jewellery.



One of the leading Gold and Silver Bullion Merchants
&
Over 5000 trusted customers across South India.





A PROJECT BY :
Future Ready Spaces

KALASHA

REALTORS

**MARKETING OFFICE
OPEN ON SUNDAY**

 **81795 06999**
www.kalasharealtors.com

PROJECT CONSULTANTS

- Principal Architect -



- Structure -



- MEP -



- Landscaping -

